

Student Remote access to the BTC network from **off-campus**

Do not access the internet through this server, it will be slow and limited. Use your existing home internet connection for better speed and usability.

When finished with your work, don't leave it logged in, but disconnect to prevent security intrusions and to free up resources for other users

Quick Connect to the Remote BTC Server

Windows Vista or later – This may vary from computer to computer

- Start Button – Programs – Accessories – Communications – “Remote Desktop Connection” or Start Button – Programs – Accessories – “Remote Desktop Connection”
- Once the client starts, enter **remote.btc.edu** for the computer and click Connect. (See illustration below)



- Once it connects it will ask you to login. Use your student network login name and password (bham-tech\username)
- When you are finished log off the server by clicking the **Start Button** and then **Log off**
- **For Windows Vista or later/Mac OS/Linux Users** note the required setting below (Options button, Advanced Tab, Server Authentication)

Linux

- This may vary depending on which distribution of Linux you have, but we tested it with ubuntu which allows you to access the Terminal Services client from the following menus.
- Applications – Internet – Terminal Services Client
- Once the client starts, enter **remote.btc.edu**.
- Once it connects it will ask you to login. Use your student network login name and password
- When you are finished log off the server by clicking the **Start Button** and then **Log off**

Mac

- You will need to install the Remote Desktop Connection client from the iTunes app store: <https://itunes.apple.com/us/app/microsoft-remote-desktop/id714464092?mt=8>
- Once the client starts, enter **remote.btc.edu**.
- Once it connects it will ask you to login. Use your student network login name and password
- When you are finished log off the server by clicking the **Start Button** and then **Log off**

Advanced setup of the Remote BTC Server (You will only need to do these steps once)

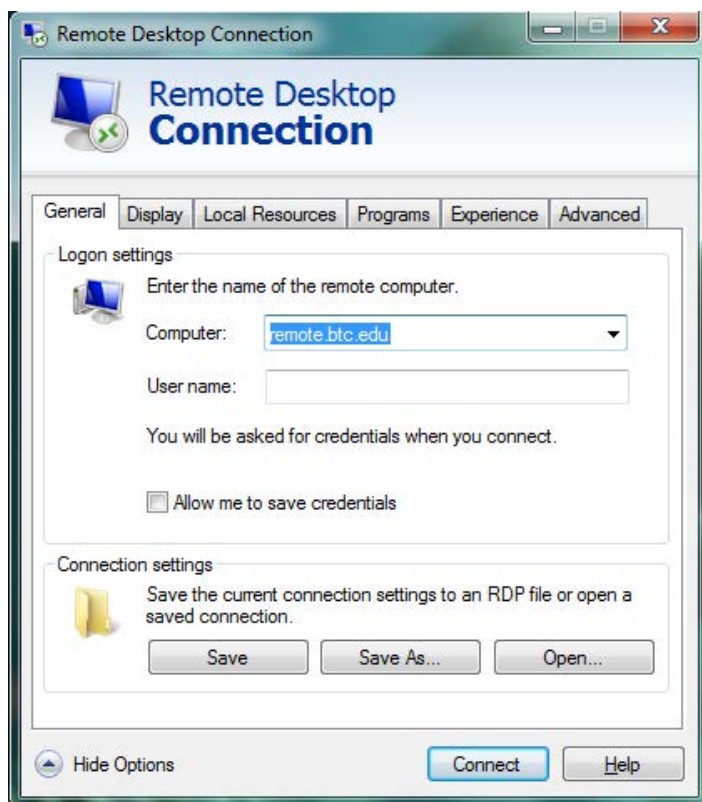
In Windows – This may vary from computer to computer

- Start – Programs – Accessories – Communications – “Remote Desktop Connection” or Start – Programs – Accessories – “Remote Desktop Connection”
- **For Windows Users** note the required setting below (Options button, Advanced Tab, Server Authentication)

The client settings work with Windows, Mac OS and Linux with minor differences.

Start the Remote Connection client and click on **Options** to show the configuration settings

The illustration below is from Windows 7, but the client will look similar on other operating systems.



General Tab

- Computer – remote.btc.edu
- **Do not** enter username, password, domain
- **Do not** check “Save my password” or “Allow me to save credentials”

Display Tab

Can adjust screen size, color depth, etc. Set the Colors setting to High Color (16 bit). You can also use True Color (24 bit), but it may decrease the speed

Local Resources Tab

- For Security reasons some of these settings may be blocked
- Check **Printers** to be able to print on your home printer
 - Once you connect to the server your printer will appear in the list of printers.
 - (e.g. HP Laserjet 5 (from <Home Computer Name>) in session x
- Check **Clipboard** to be able to copy and paste between the server and your home computer
- Click the **More** button to select which drives on

your home computer are accessible when you are connected to the server.

Experience Tab

For better performance **uncheck** the following

- Desktop Background
- Show contents of window ...
- Menu and window animation
- Themes

Advanced Tab

Under the Server authentication section use the arrow drop down box to select “Connect and don't warn me”

Save your Settings

- After you have made your changes in the tabs explained above, click **Save As** to save your settings.
- Make a note of the file created and use that file to start your remote connection.
- Right-Click and select **Edit** to edit the shortcut later on as needed.
- When finished, click **Cancel** on the General tab to close the setup

Use the following steps to use your saved connection.

- Double-Click the shortcut/file you created to start the connection
- Your speed will depend on your internet connection
- Once it connects it will ask you to login. Use your student network login name and password
- You will have access to your network drives.
- Due to licensing issues, you may not have access to all the software applications that you can use on a campus computer.
- The bar at the top of the screen allow you to minimize, maximize or shutdown the connection to the server
- **To logout click “Start” and then “Logout”**

When finished with your work, don't leave it logged in, but disconnect to free up resources for other users.