



# TRANSFORMING OUR REGION

one student at a time

BELLINGHAM TECHNICAL COLLEGE  
COMMUNITY REPORT 2011/2012



# Bellingham Technical College



## **BTC BOARD OF TRUSTEES**

Jim Groves, Board Chair  
Debbie Ahl  
Mark Asmundson  
Jim Cunningham  
Lisa Woo

## **BTC LEADERSHIP**

Dr. Patricia McKeown, President  
Debra Jones, VP Administrative Services  
Carol Lager, VP Instruction

## **BTC FOUNDATION**

### **BOARD OF DIRECTORS**

John Macpherson, Board President  
David Blair, Past-President  
Sharon Isenhardt, Vice-President  
Matt Rose, Treasurer  
Max Legg, Secretary  
Mike Abendhoff  
Jeff Callender  
Peggy Hinton  
Jeff Kochman  
Bob Morse  
Gary Nelson  
Jim Ryan  
Judy Smith  
Shannon Terrell  
Bob Warshawer  
Jim Wells, Ex Officio  
Russ Whidbee

## **MISSION STATEMENT**

Bellingham Technical College delivers superior professional technical education for today's needs and tomorrow's opportunities.

## **VISION**

BTC will be a recognized leader in providing innovative technical education, supporting regional economic development, and giving students the tools for career success.

## **VALUES**

As a learning community, Bellingham Technical College is committed to educational excellence and equity realized through a positive, values-based College environment. To realize BTC's mission and vision, the College will adhere to the following values:

### **Student-Centered**

Creating a respectful, supportive, and inclusive environment for all students

### **Responsive**

Embracing positive, evidence-based change that meets current and emerging needs

### **Collaborative**

Creating and leveraging partnerships and resources to achieve shared values and goals for students, the College and the community

### **Integrity**

Promoting a culture of respect and accountability, practicing ethical decision-making, and ensuring responsible stewardship of all resources.

# Letter from the president

---

Dear Friends of Bellingham Technical College,

The last few years have been an interesting time. Our nation, state, and local region and subsequently BTC have been impacted by the consequences of a struggling economy. Due to the College's loss of revenues (State), just like business and industry BTC has had to adjust and re-set how we do business. In spite of these challenges Bellingham Technical College is thriving and has many positive accomplishments to report.

Our professional technical programs are strong. We continue to seek the support of individuals, business and industry and State and Federal agencies to provide resources to expand and enhance our programs through grants and donations to insure they are current. Student tuition has risen but through the generosity of individuals and businesses BTC is providing more dollars in scholarships than ever before.

BTC continues to deliver student centered, high quality professional technical education for today's needs and tomorrow's opportunities. More than ever before BTC is expanding transfer opportunities so our students can seek a baccalaureate degree. The college is part of several State initiatives to address the growing aerospace needs as well as our regional advanced manufacturing and healthcare sectors. BTC has a large cadre of healthcare programs that are continually updating their curriculum and delivery to meet the changing workforce needs. Our industrial and technical programs are well known for high quality, not only in Washington State but nationally. Our Culinary Hot Food Team won silver medals at the Western Regional Hot Food Competition. It is exciting to know the interest in employers for our graduates; our job placement rate remains above 80%. Campus job fairs had more than twice the number of employers showcasing and competing for our graduates. Information we have received from our business partners is that their economics are improving, and they are hiring. The recovery news is very encouraging.

The physical look of our campus is in a state of transformation. We invite you to visit our new Campus Center building and Foundation Donor Wall which will be completed later this fall. Our new facility, designed to address the college's growth, is the largest campus building (70,000 square feet) and marks the first three-story building on our campus. The Campus Center contains our Campus Store, the Settlemyer Family Hall (a great space for all kinds of campus events); a beautiful and phenomenally equipped restaurant, the Wood Stone Kitchen; new space for our computer networking and business programs; offices, workrooms, conference rooms and student gathering spaces; a Student Center; and a stunning library. We also will begin construction of the new Perry Center for Fisheries and Aquaculture Sciences in the Maritime Heritage Park this fall. The face of Bellingham Technical College's campus is wonderfully improved!

Sincerely,



Patricia McKeown, Ed.D  
President



# A Roadmap for success

---

BTC's strategic plan is the basis for decision making, providing direction to where the College deploys human and capital resources. We work with intention, guided by five strategic goals:

## **Student Success**

- Providing opportunity and support to help students reach their academic and career goals
- Increasing retention rates to see every student reach their goal of achieving a certificate or a 2-year degree

## **Excellence & Innovation**

- Responding to the changing needs of business and industry
- Maintaining relevant, high-quality programs to equip students with skills employers need
- Fostering a culture of continuous improvement and valuing diversity
- Identifying and implementing emerging technologies and sustainable practices

## **Access**

- Giving our students and community members every opportunity to start, continue or finish their path to fulfilling, productive lives and family-wage careers
- Delivering quality instruction through innovative means, including off-campus classes, online offerings and alternative scheduling
- Supporting underserved (transitional/disadvantaged/low-skilled) populations by identifying and meeting their specific needs

## **Marketing & Resource Development**

- Strengthening efforts to enhance BTC's image and maintain a dynamic, effective web presence
- Gaining support by increasing community awareness and support
- Maximizing all revenue streams

## **Welcoming Campus Environment**

- Fostering an inclusive environment for students, staff and the public
- Promoting a sense of community, respect, and an effective work and learning environment
- Maintaining a safe, attractive and welcoming campus for all

During this next year BTC will complete a revision of the strategic goals.



## BTC Student Snapshot

Average # of Students per Quarter	4,058
Average Age	35
Graduates (2011)	782
Running Start students (high school)	77
Students of color	20%
Students holding Baccalaureate Degrees	13%
Placement rate of graduates	84%
Average graduates' hourly wage, nine months after graduating	\$18.85

## BTC Degrees and Certificates

Bellingham Technical College offers 33 associate degree (A.A.S. and A.A.S.-T.) and 55 certificate options in the following fields:

- Construction and Engineering Technology
- Culinary Arts
- Fisheries and Aquaculture
- Health Careers and Child & Family Studies
- Manufacturing and Industrial Technology
- Management, Business and Computer Technology
- Transportation and Mechanical Technology

The college also provides classes, programs, and opportunities to assist students in acquiring learning skills necessary for academic and occupational success, and for personal enrichment.



# Expanding Success

every student deserves the opportunity to succeed

**Positioning more students to reach a certificate or 2-year degree begins through BTC's campus-wide initiatives and goals, grant-funded projects, and support from key partners.**

Accreditation – BTC is accredited through the Northwest Commission on Colleges and Universities.

Achieving the Dream (ATD) – A grant project to improve student outcomes through innovative, evidence-based change.

Equity for All Students – A primary goal is to ensure equitable access and support for all students.

Excellence in Teaching and Learning – BTC strives to provide high-quality educational opportunities.

Fund for the Improvement of Postsecondary Education (FIPSE)

– A Federal grant project supporting a redesign of BTC's basic academic instruction.

Governance Institute for Student Success (GISS)  
– A strategy to help the BTC Board of Trustees analyze student achievement data.

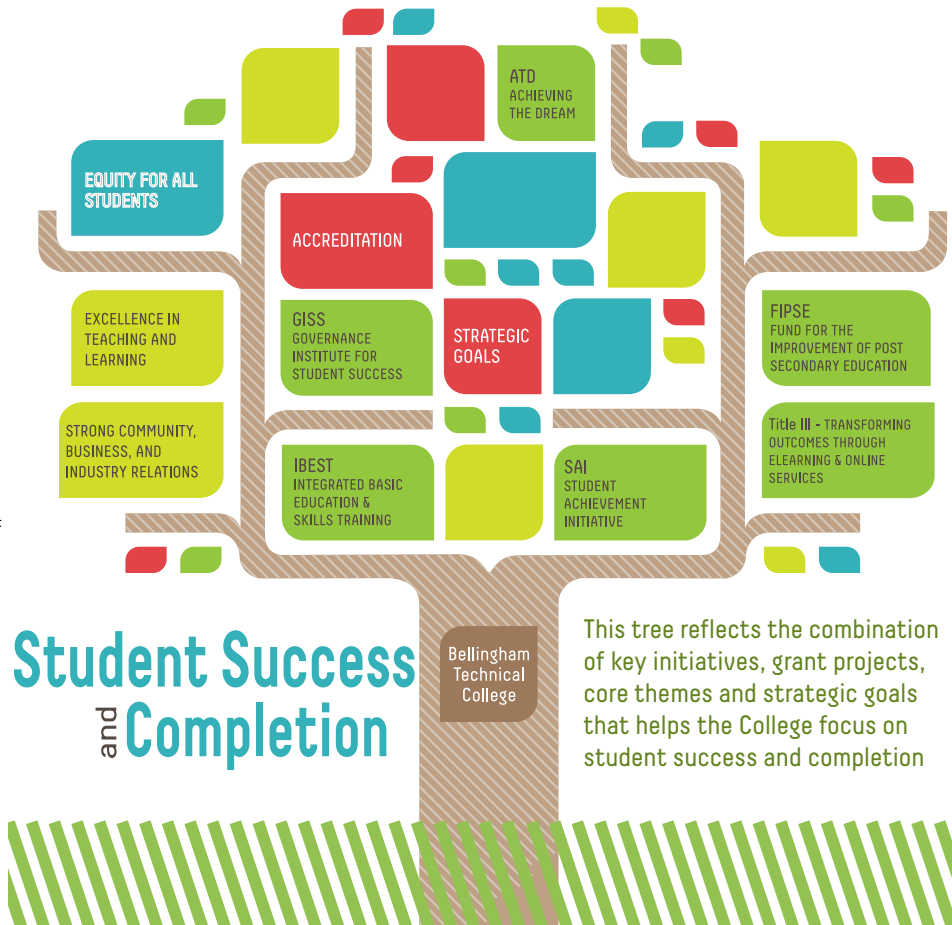
Integrated Basic Education & Skills Training (IBEST) – An instructional model that provides a “jump-start” into College programs for students who need extra academic assistance.

Strategic Goals – The Goals direct College efforts, resources, and decision making.

Strong Community, Business and Industry Relations – A primary BTC goal.

Student Achievement Initiative (SAI) – A State Board of Community and Technical Colleges performance funding model that tracks student achievement and success.

Title III – A Federal grant project supporting strong student success, transition, and completion strategies.



## BTC graduates find success

“The mix of hands-on experience and coursework in restaurant management really helped prepare me in launching Nimbus and Dashi. The level of instruction is among the best in the state and at a cost that is well below the private culinary colleges.”

—Josh Silverman

BTC Culinary Arts Graduate & Local Restaurant Owner

Josh Silverman is a perfect example of what can happen when students uncover the potential of their BTC education.

A graduate of BTC's Culinary Arts program, Josh brought a passion for food as well as experience working in restaurants when he started attending BTC. “I always knew I wanted to be a chef and eventually open my own restaurant.” Josh found the knowledge and skills he gained at BTC were just the ticket to launching two successful and notable local restaurants – Nimbus Restaurant and Dashi Noodle Bar. “In the last quarter of our program, we were tasked with designing a business plan for a restaurant, and I used a lot of that material to launch Nimbus and I'm using it still today as Dashi develops.”

After making a name for himself on the local culinary scene, Josh was asked by BTC's Culinary Arts faculty to come back and serve on the program's Advisory Committee. “It's a great opportunity to give back to the College that has given so much to me. It's exciting to know that my input helps shape the future for BTC's students and the Culinary Arts program.”

After several successful years running Nimbus at the top of the Bellingham Towers, Josh and his staff began to feel the pinch of a lagging economy. It was at this point that he decided to turn his attention to a new idea, which became Dashi Noodle Bar. “I wanted to create something that honored local foods but something more approachable for the broader community at a lower price point.”

With a little help from his friend Mataio Gillis, also a Culinary Arts Advisory Committee member, Josh launched Dashi Noodle Bar out of the back door of Ciao Thyme on Unity Street. Dashi opened to people lining up around the block just to get a taste of Josh's latest creation. “The location on Unity Street served as a test kitchen for us. We wanted to see if the idea caught on before moving into a more permanent space.” It didn't take long for Josh to realize he had a winning idea. He is now in process of renovating a space on State Street, near the YMCA, where he will open in September with extended hours and an expanded menu. In the meantime, Dashi can be found at the downtown and Fairhaven Farmer's Markets and Kulshan Brewery on Mondays.

“BTC had a great reputation when I first started there, and it's been amazing to see how the college and culinary program have grown in size and reputation. The College and the Foundation have always been committed to their students. With the job market the way it is, there's no better education you can find in this area. There's really no better place to go!”



# BTC Advisory Committees

The degree & certificate programs at Bellingham Technical College rely on the involvement and support of over 300 business and industry employers and employees from the community. Advice and direction offered by experts in the working world ensure that students are acquiring the knowledge and skills that are in demand in the workforce.

An advisory committee representing a specific professional technical field meets regularly with the faculty and administration on matters of curriculum review and development, facilities and equipment, guidance and career advisement, employment opportunities and placement, plus public relations and promotional activities.

Following are the business and community partners represented on our advisory committees.

## 2011-2012 BTC ADVISORY COMMITTEE PARTNERS

3D Computer Corporation  
4th Corner Neurosurgical Associates  
Abbott Construction Company  
Absorption Corporation  
Alcoa Intalco Works  
All American Marine  
Andgar Corporation  
Animal Eye Care  
Answers Maternity Support Services  
and Infant Care  
Anvil Corporation  
Applied Research Northwest  
Arbour North Architects  
Associates in Family Medicine  
B B Lumber & Hardware  
Baron Telecommunications  
Barrett Transmission  
Barron Heating & Air Conditioning  
Bayou on the Bay  
Bellingham Automotive  
Bellingham Childcare and Learning  
Center  
Bellingham City Parks  
Bellingham Cold Storage Company  
Bellingham Fire Dept.  
Bellingham Goodwill Job Training &  
Education Center  
Bellingham Hatchery  
Bellingham OBGYN (BOGA)  
Bellingham School District  
Bellingham Technical College  
Bel-Red Heating  
BIO - OREGON  
Birch Equipment  
Blade Chevrolet  
BP Cherry Point Refinery  
Building Industry Association of  
Whatcom County  
Callen Construction  
Canfor U.S.A.

Carpenters & Joiners Local 756  
Cascade Valley Hospital and Clinics  
Cedarprime, Inc.  
Central Welding Supply  
CH2MHILL  
Christensen Net Works  
Ciao Thyme  
City of Bellingham  
City of Seattle  
CL Projects  
CMC ICOS Biologics  
COB/Bellingham Fire Dept.  
Conoco Phillips Refinery  
Consolidated Electrical Distributors  
Cowden Gravel  
Dahl Electric  
Dakota Creek Industries  
Dally's Auto Body  
Data Doctors Computer Services  
David Evans & Associates  
DEL  
Del Bosman  
Department of Fish & Wildlife  
Dewey Griffin Pontiac, Buick, GMC,  
Subaru  
Diane Pady's Photography  
Dr. Hovorka  
Dr. John's Auto Clinic  
Dutch Mothers Family Restaurant  
E.A. Thompson Co.  
Ebenal  
Edco  
Electric West, Inc.  
Electronic Service Professionals  
Engineering Automation Report  
Entrada/San Juan, Inc.  
Ershigs Incorporated  
ESD 189  
Fairhaven Veterinary Hospital  
Family Care Network

Family Health Associates  
Favinger Plumbing Inc.  
Ferndale School District  
FHS Special Services Teacher/  
Ferndale  
Fluke Corporation  
G. B. Enterprises, Inc.  
Gitts Custom Painting & Autobody  
Granite Northwest Inc.  
Greenbriar Construction  
Greysam Industrial Services  
Haggen Foods  
Harborside Bistro at Hotel Bellether  
Heath Tecna, Incorporated  
Highland Care Center  
Hinet  
IBEW 191  
IEC of Washington  
Industrial Credit Union  
Intel Corporation  
International Market Access, Inc.  
Island Hospital  
Jerry Chambers Chevrolet  
JH Kelly, Incorporated  
John Kole Vehicle Repair  
Jones Lang LaSalle  
Kenworth Truck Company  
Kids World  
Kimberly Clark  
Krause Manufacturing, Inc.  
Kulshan Community Land Trust  
Kulshan Veterinary Hospital  
LaHatt Engineering  
Lakeway Inn Best Western  
Larrabee Animal Medicine  
Larry Steele & Associates, Inc.  
Let Them Eat Cake  
LFS  
Little Steps Day Care  
Logos Software

Lummi Nation/Skoookum Creek  
Lynden Sheet Metal  
MacDonald-Miller Facility Solution  
Master Auto Tech  
Metcalf Hodges  
Moore Fish Co.  
Motor Trucks, Inc.  
Motorola  
Mt Baker Care Center  
Mt. Baker Imaging  
Mt. Baker Products  
Naturally Decadent Affairs  
Nature's Path Corporation  
Nimbus Restaurant  
Nooksack Schools  
North County Fire Dept.  
Northstar Woodworks, Inc.  
Northwest Career & Technical  
Academy  
Northwest Honda  
Northwest Indian College  
Northwest Radiology  
Northwest Regional Council  
NWEW JATC  
Olsen Auto Body  
Omni Tech  
Oxbo Corporation  
PACCAR Technical Center  
Pacific Surveying & Engineering, Inc.  
Pacific Woodtech Corporation  
PCE Pacific, Inc.  
Peace Health  
Peak Services Inc.  
Pederson Brothers, Inc.  
Peoples Bank  
Pet Emergency Center  
Pfizer Animal Health  
Platt Electric  
Plumbers Pipefitters Local#26  
Port of Bellingham

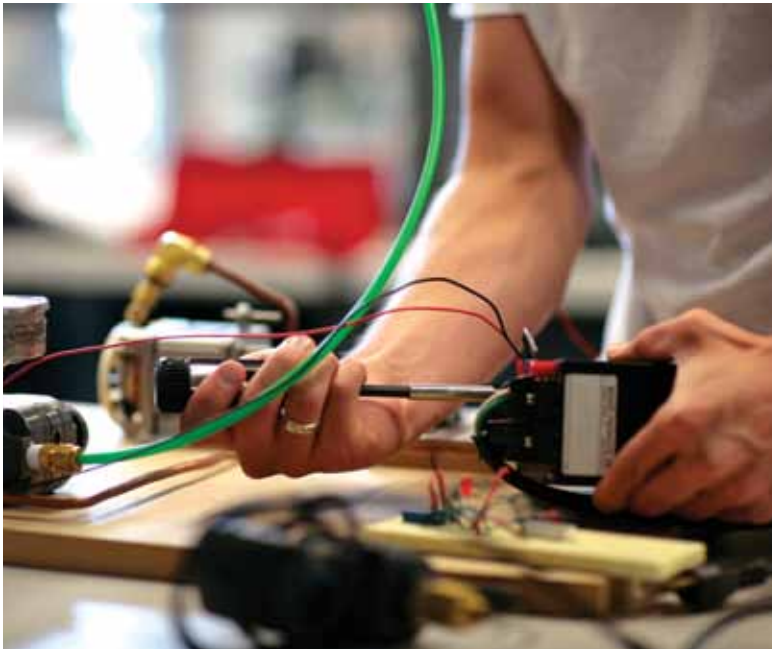


Portionables  
 POS-X Inc.  
 Precision Performance Consulting  
 Pro CNC Inc.  
 Providence Hospital  
 Puget Sound Energy  
 Refrigeration Supplies District  
 Richey's Auto Collision  
 Rothenbuhler Engineering, Inc.  
 RYZEX  
 San Juan Fire Dept. #2  
 Scotty Browns Restaurant  
 SeaMar Community Health Center  
 Sears  
 Select Plastics  
 Semiahmoo Hotel  
 Service Pro  
 Sheet Metal Workers Local #66  
 Shell Exploration/Production Co.  
 Shell Puget Sound Refinery  
 Shuksan Healthcare  
 Skagit Animal Clinic  
 Skagit Valley Hospital  
 Smith Mechanical

Socially Responsive Financial  
 Advisors  
 SPIE  
 Squalicum Family Dental  
 St. Francis  
 St. Joseph Hospital  
 St. Joseph Hospital-Center for Senior  
 Health  
 Standard Welding  
 Sterling Health Plans  
 Stremler Gravel Inc.  
 Strider Construction  
 Sustainable Connections  
 Taylor Shellfish  
 Ted Iverson Auto Body  
 Tenaska  
 Terra Power Systems LLC  
 Tesoro Northwest Corporation  
 The Wool-Zee Company, Inc.  
 Thermal Supply  
 T-Mobile  
 Trans-Ocean Products  
 Tri-County Diesel Marine  
 TsoCorp

United Energy Engineers  
 University of Washington - Bothell  
 Unlimited Service  
 Unlimited Service Downtown  
 Valley Freightliner Inc.  
 Valley General Hospital  
 Vavra Auto Body  
 VECA Electric  
 Walgreen's Home Care  
 Washington State Dept of  
 Transportation  
 WAY Broadcasting  
 WCFD #2  
 WCFD #7  
 West Mechanical  
 Western Washington Operating  
 Engineers  
 Western Washington University  
 Whatcom Co. Health Department  
 Whatcom Co. Health Department  
 Whatcom Co. Public Works  
 Whatcom Community College  
 Whatcom County Library System  
 Whatcom County Opportunity  
 Council

Whatcom County Planning  
 Department  
 Whatcom County Prosecutor's  
 Office  
 Whatcom County Public Works  
 Whatcom County Superior Court  
 Whatcom Dispute Resolution Center  
 Whatcom Electric Company  
 Whatcom Literacy Council  
 Whatcom Transportation Authority  
 Whatcom Veterinary Hospital  
 Williams Northwest Pipeline  
 Wilson Engineering LLC  
 Wireless Detection Corporation  
 Wiztronics, Inc.  
 Wood Stone Corporation  
 WorkSource-Whatcom/NWDC  
 Zender's Truck & Equipment



### BTC AND OUR REGION'S EMPLOYERS

BTC's mission is to provide an educated and well skilled workforce. While our graduates are hired by all of our advisory committee partner businesses and organizations, here are some of the larger employers who hire BTC grads:

Alcoa Intalco Works  
 All American Marine  
 Andgar Corporation  
 Anvil Corporation  
 Birch Equipment  
 Blue Sea Systems  
 Blythe Plumbing & Heating, Inc.  
 BP Cherry Point  
 CH2M HILL  
 City of Bellingham  
 Phillips 66 Ferndale Refinery  
 Dawson Construction  
 Diamond B Constructors  
 Emerson Process Management  
 Haggan, Inc.  
 Jerry Chambers Chevrolet Cadillac  
 JH Kelly  
 Kinder Morgan

Matrix Service Company  
 Mt. Baker Imaging  
 PeaceHealth St. Joseph  
 Medical Center  
 Pederson Bros., Inc.  
 Puget Sound Energy  
 Ryzex Corporation  
 Semiahmoo Golf & Country Club  
 Shell Puget Sound Refinery  
 SPIE  
 Tesoro Anacortes Refinery  
 Tiger Construction  
 WA Dept. of Fish and Wildlife  
 Whatcom County  
 Williams Northwest Pipeline  
 Wilson Engineering

# BTC is a sound investment

contributing to economic prosperity

**Bellingham Technical College plays a significant role in the vitality of our local and state economy, and we're proud of the return on investment we achieve for our region's employers, our citizens and our students.\***

## For our Students

- An associate's degree in Whatcom County means a mid-career income of \$38,600, 35% higher than a high school diploma holder's income.
- Students enjoy a 21.8% return on their investment in a BTC education, recovering all costs—tuition, fees and foregone wages—in just over six years.

## For Whatcom County

- BTC operations add a net of \$15.9 million to Whatcom County's economy in added labor and non-labor income each year.
- BTC graduates' accumulated contributions are estimated to add some \$115.1 million in income to Whatcom County annually.
- Together, BTC and its students add an average annual income of \$131 million, which is approximately equal to 1.8% of the total Whatcom County economy.

## For Taxpayers

- For every dollar of state and local government support to BTC in 2009-2010, taxpayers will see a return of over \$1.80 over a student's career.

## For the State

- BTC students' increased incomes, plus the boost in productivity from the businesses that employ them, expand Washington's tax base by an estimated \$14.4 million each year.

## Social Impact

- BTC education reduces poverty, crime and the need for social services, saving the public nearly \$840,000 in annual associated costs. These benefits will accrue for years into the future.
- BTC education increases lifetime income, expanding our economic and tax base.
- BTC students are less likely to draw welfare or unemployment benefits, commit crimes, smoke or abuse alcohol.

**BTC plays a central role in sustaining a healthy community, connecting a network of businesses, families and neighborhoods.**

\*Economic Modeling Specialists Inc., The Economic Contributions of Bellingham Technical College, February 2011. Data sources include: the Washington State Board for Community and Technical Colleges (SBCTC); U.S. Bureau of Labor Statistics; U.S. Census Bureau; and various studies and surveys related to education and social behavior.

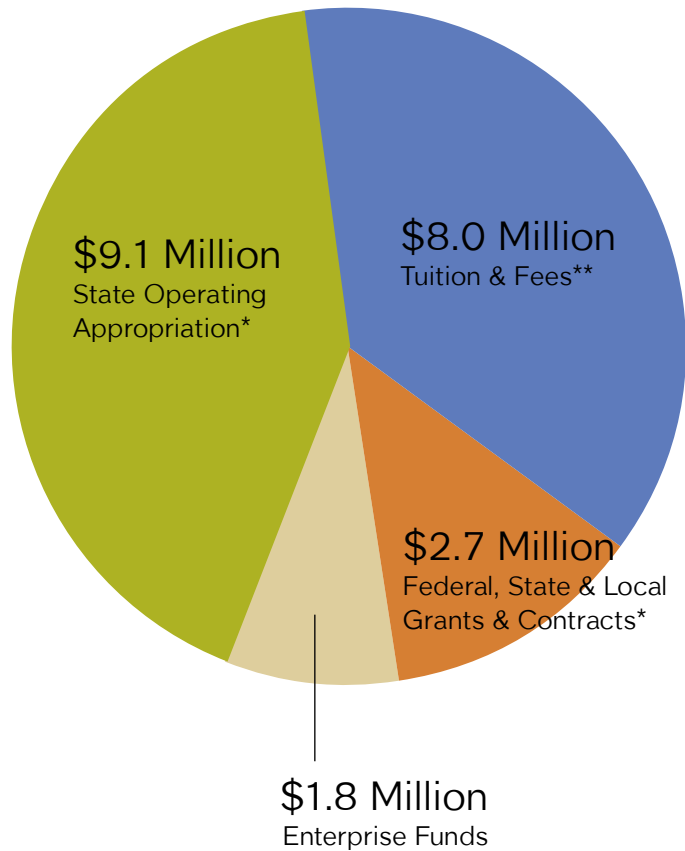


# 2011-2012 Revenue and Expenses

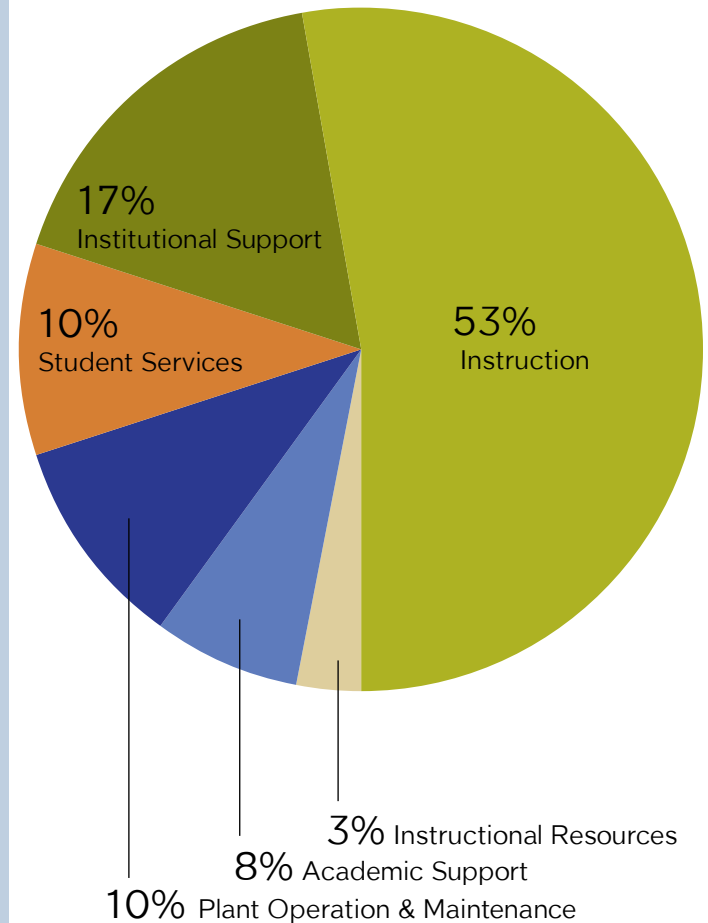
In light of declining state support, BTC has responded by increasing Enterprise revenue and through successfully securing more grant funding to make up the shortfall. The expenditures mix reflects the strong commitment to Instruction.

## Revenue Mix

\$21.6 Million Overall College Revenue  
(excluding Student Aid and Capital Pass-thru funds)



## Expenditures Mix



\*Excluding Financial Aid

\*\*Excluding S&A and Building Fees

# BTC Foundation

building relationships and supporting student achievement

**The Bellingham Technical College Foundation is organized to stimulate private support for the programs, needs and enhancements of the College; to optimize student access to the College's programs and services; and to elevate the College to excellence through fundraising, public awareness activities, and partnerships with its diverse communities.**

Dear Friends of the Bellingham Technical College Foundation,

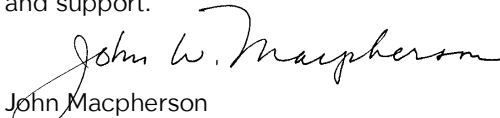
As my term as Foundation President winds down, I thought you would enjoy a summary of the Foundation's most recent accomplishments along with some of our plans for 2012/2013.

What comes to mind first is our Gala Dinner and Auction, *High Heels and Black Ties Change Lives*. Thanks to the organizers' and volunteers' tremendous efforts, the event was a rousing success with net proceeds of almost \$100,000.

This year has been one of transition. Late in the summer of 2011 Mary Humphries left as Executive Director with a legacy of guiding the Foundation to a three-fold increase in our annual scholarship and endowment funding. New Executive Director Dean Fulton joined the Foundation last December. Dean, a Washington native, joins us with 15 years of fundraising experience and a passion to move the BTC Foundation forward.

It's been a productive year, but we have so many opportunities for further progress. Primary goals include connecting better with alumni, winning more grants, and raising more money for foundation operations while we continue to increase our exposure in the community, fund more scholarships, secure new planned gifts, and support BTC's projects.

BTC is a special place that is very effectively impacting the lives of many people in positive ways. Thank you for your friendship and support.



John Macpherson  
Bellingham Technical College Foundation President



## looking back

**2011-2012**

### FUNDRAISING ACCOMPLISHMENTS

Annual Scholarships	\$181,025
Endowed Scholarships	\$ 50,093
Fund for Student Excellence*	\$334,838 †
Program Equipment Support	\$11,000
Campaign for the Perry Center for Fisheries and Aquaculture Sciences**	\$425, 250 (cash & pledges)

**Total Support to BTC** **\$1,002,206**

## looking ahead

**2012-2013**

### FUNDRAISING GOALS

Annual Scholarships	\$200,000
Endowed Scholarships	\$333,000
Fund for Student Excellence*	\$137,000
Program Equipment Support	\$50,000
Campaign for the Perry Center for Fisheries and Aquaculture Sciences**	\$370,000

**Grand Total** **\$1,090,000**

\* The Fund for Student Excellence supports a diverse spectrum of BTC programs

\*\* BTC initiated capital campaign

† includes undesignated proceeds from the *High Heels and Black Ties Change Lives* auction

# The Perry Center for Fisheries & Aquaculture Sciences

Last fall the Bellingham Technical College (BTC) renewed the campaign to raise the funds necessary to construct a new building in the Maritime Heritage Park for the BTC Fisheries & Aquaculture Program. We are very grateful to our donors for their contributions to support this effort. This commitment helps ensure that BTC's outstanding program will continue to sustain & enhance our important fisheries, aquaculture, and maritime industries for generations to come.

During the past several months BTC has made tremendous progress in our effort to make the new building a reality. Some of our notable accomplishments include: securing a \$2 million matching grant from Washington State, obtaining the financial commitment to support this project from the BTC Board of Trustees, and establishing a group of volunteer 'Ambassadors' to assist with the campaign.

Chuck Bundrant, owner of Trident Seafoods, provided a generous contribution in honor of his dear friends and business associates, Edd and Virginia Perry. Thus, the building will be named The Perry Center for Fisheries & Aquaculture Sciences. Chuck and Edd have worked together for many years throughout the Northwest and Alaska – with Trident Seafoods and San Juan Seafoods. Edd is a much-respected man within the fishing industry and naming the building in his honor ensures that his legacy lives on for generations to come.

Additionally, BTC has secured funds sufficient for naming rights for the public viewing lobby from The Rotary Club of Bellingham and the wet lab from Taylor Shellfish and Seattle Shellfish, LLC. Thanks to our dedicated staff and volunteers, we have raised more than one million dollars from public & private foundations, businesses and individuals throughout the Northwest, service organizations, the County Economic Development Fund, and our generous BTC employees.

Building designs have been solidified and the construction process is under way. We are thankful for the support and encouragement we have received for this project. Together, we are ensuring that our precious northwest natural resources are preserved and enhanced for all to enjoy for many years to come. If you have any questions about this project please contact BTC Foundation Director Dean Fulton at (360)752-8378.



*Ceremonial groundbreaking for the new building (from left) - BTC Trustee, Mark Asmundson, Diane Bundrant, Chuck Bundrant, Virginia Perry, Edd Perry, Fisheries Instructor, Earl Steele, and BTC President, Patricia McKeown.*

## Donor profile

### Earl Settlemyer

#### THE LASTING LEGACY OF EARL SETTLEMYER

Making a real difference in the lives of BTC students

Earl Settlemyer was an exceptionally generous partner of Bellingham Technical College whose philosophy can inspire each of us. Earl spent his life in full appreciation of the transforming power of art, music, nature and education. He believed in philanthropy and lived by the Rotarian motto of "service above self."

After a successful finance career, Earl was drawn to Bellingham's appealing natural, educational and cultural environment. He retired here and soon became a well-known fixture at arts and music events, as well as on non-profit boards—including the BTC Foundation Board of Directors.

Through his expertise and financial support, Earl gave of himself to several local educational institutions; he established scholarships at BTC, Western Washington University, Whatcom Community College and the Whatcom Community Foundation's Bellingham Dollars for Scholars program.

Through the life-changing power of education for everyone, Earl Settlemyer left a legacy of excellence and an invitation to follow his lead in helping raise our community to its highest purpose.

Earl Settlemyer passed away after a brief illness in May 2010. But his inspiring message will live on through the more than thirty students whose lives are transformed every year by the power of education, made possible by the generosity of the Settlemyer Family Endowment.



# Donor recognition

**The Foundation gratefully acknowledges all donors who contributed to the BTC Foundation from July 1, 2011 through June 30, 2012.**

Mike & Cindy Abendhoff	Bellingham Technical College Board of Trustees	Mary Ann Crawford & Craig Robinson	Gaye Godfrey
Active Earth Designs	Bernard & Audrey Jaffe Foundation	Bill Critz & Eve Magyar	Tim & Lisa Goering
Brandon Adams	Black Rock Cable Inc.	Tracy & Rob Crowley	Jeffrey Golden
Steve & Debbie Adelstein	David & Cheryl Blair	Cliff Cultee	Grainger Industrial Supply
Advantage Vending & Distribution	Julie Blazek & Jacque Beamer	Jim & Joan Cunningham	Debbie & Peter Granger
Debbie Ahl & Bill Ziels	Audrey Borders	Liz & Stephen Cunningham	Greenberry Industrial
Alcoa Intalco Works	Anne Bowen	John & Barbara Curry	Tamara Gregoire
All American Marine	BP Cherry Point Refinery	Margaret & Marc Curtis	Jim & LoBay Groves
American Association of University Women (AAUW)	BP Fabric of America Fund	Terry & Renee Dawn	Ron Grubb
American Canadian Fisheries, Inc.	Patty Monrean & Michael Bradburn	Dawson Construction, Inc.	Niall & Terri Hackett
American Culinary Federation/WA State Chef Association	Dave & Penny Bradley	Steven Demmert	Scott Ham & Christina Dodd
AMR - A Division of Senior Operations, LLC	Tom & Amy Brewster	Matt & Brenda Dennis	Brett Hanson
Greg & Judy Anders	Chris Brod	Myles & Jere Donnelly	Betty Hanson
Pauline & Jim Anderson	Rud & Sheila Browne	Patricia & Jonathan Dubiel	Haskell Corporation
Chris & Carol Anderson	Jan Brumfield	Dunkin and Bush, Inc.	Bob & Beverly Helton
Cindy Anderson	BTC Associated Student Body	Rick & Donna Dutton	Hilde Hettegger-Korsmo
Anvil Corporation	Beth Buckland	K.M. Dykas	J.C. & Mary Hickman
Aquacare Environment Inc.	J. Hope Burse	Lisa Ann Dzyban	Peggy Hinton
Brian Aries	Jeff & Christy Callender	Kurt & Wendy Eickmeyer	Kathi Hiyane-Brown
Associated General Contractors	Canada Cutlery	Ed Einarson	HKP Architects
AutoDesk, Inc.	Canyon Industries	Eleanor & Henry Jansen Foundation	Marlyce Hogan
Automotive Services Association of Whatcom County	Sharon Carpenter	Emerson Process Management	Missy Holland
Robert Bailey & Susan Queller	Yvonne Cartwright	Rose Ernst	Dennis & Sylvia Holmstrom
David Baily	Cascade Natural Gas	Herb & Billee Ershig	Karen Homitz
Michael Baldwin	CH2M HILL	Katti & David Esp	Cori Hook
Bank of America	Kathleen Chambers	Estate of Earl Settlemyer	John Hoyt
James Barber	Erica Charbonneau	Kay Evans	Austin & Nina Huang
Barkley Company	Christopher Fisheries	Lee Falta	Mary Humphries
Glendine Barley	Ann Clark	George & Ruth Ferguson Foundation	Georgia Hulac & Diane Albright
Tish Bartz	Patrice Clark	Kevin & Diane Formway	Laura Hutton
Jim & Tanya Baumgart	Bob & Janice Clayton	Arline Fonda	IBEW Local #191
Hank & Erin Baumgart	Robert Cofer	Valerie & Jim Frank	Icicle Seafoods, Inc.
Mike & Heather Bayless	Cleary & Aleen Cone	Franklin Corporation	Frank & Patti Imhof
Chuck & Mary Pat Beard	Lisa Cook	Lindy Fraser	Walt Ingram
David & Karen Bellingar	Joe & Judy Coons	Brad Gablehouse	Ken & Marsha Isenhardt
Bellingham Bay Rotary Club	Stan & Mona Cooper	Gateway Pacific Terminal	Sharon & Steve Isenhardt
Bellingham Cold Storage	Rob Costello & Susan Parker	General Chemical	JH Kelly
	Greg & Linda Cowan	Curt Genther	Robin Johnson
	Colleen Coyne	Cathie Gerlicher	Dave & Debra Jones
	Linda Crawford	Mataio & Jessica Gillis	Sorrell Joshua
			Rick & Ann Kaiser

# Donor recognition

## Donor profile: Brooks Manufacturing Co.



“It just makes sense.”  
—Mimi Ferlin

Brooks Manufacturing Co. is a Bellingham institution, serving the electric utility industry with wood transmission products since 1915. Owners Mimi and John Ferlin were born and raised here in Bellingham, and while they were always familiar with BTC, they decided to demonstrate their commitment to technical education by endowing a scholarship for students.

Mimi Ferlin cites two reasons for their decision to support BTC students: First, as technology progressed and machinery became more complex, so have jobs at Brooks Manufacturing become more specialized, requiring a higher level of education. Second, with the closing of the Georgia Pacific facility in Bellingham, Mimi and John observed, “capable, intelligent people were suddenly out of work.” They knew BTC was equipped to “train these workers and give them the chance to land family wage jobs and support themselves for life.”

Mimi continued, “We are strong advocates of BTC—it’s a wonderful facility for our community.

BTC meets the demand for training so many workers for these jobs. It just makes sense to support these efforts. It helps every single person in the community, not just a few. We are fortunate to be able to give, and we choose to support BTC.”



Diane Kamionka  
Iris Kaneshige & Carl Oekerman  
Kristen Kappel  
John & Margaret Karzua  
Rick Kelln  
Key Bank  
Larry Kheriaty  
Brad & Debbie Killmer  
Steve & Margie Kimberley  
King & Prince Seafoods  
Kiwanis Club of Bellingham  
Jeff & Kim Kochman  
Alex Kosimides & Gay Dubigk  
Carl Koskela  
Mary Kuebelbeck  
Beverly Kuljis  
Tony & Valerie Kuphaldt  
Jim & Kathy Kyle  
Carol Lager & Jim Metzler  
Land Surveyors Association of WA (LSAW)  
Craig Lang  
Noriko Lao  
Ronda Laughlin  
Andy & Lisa Law  
Mary Lawrence  
Max & Lauren Legg  
Joel & Tatyana Lepo  
Karen Lerner  
Don & Ginger Lindsay  
Logos Bible Software  
Jim & Patti Lombard  
Debra Loober  
LL & Barbara Lowdon  
Lummi Indian Business Council  
Lummi Island Wild  
John & Cheryl Macpherson  
Dave & A.R. Mann  
Michael Massey  
Materials Testing and Consulting  
Chuck Mather & Liz Evans  
Matrix Service Company  
Des & Joyce McArdle  
Laurie McClain  
Robert McDonnell  
Tim McEvoy  
Patricia McKeown  
Patrick & Lucinda McMahan  
Terri McMahan  
Carol & Patrick McMahan  
Kim Freier & Deacon Meier  
Barry & Debby Meyers  
Meg Miller & MinnieCaruso  
Carolyne Milling  
Mills Electric  
Eleanor Mischaikow  
Phil & Margo Montague  
Moore Fish Company  
Charles Baker & Ann Morris  
Joyce Morse  
Bob & Jeanette Morse  
Mt Baker District Dental Society  
Tim & Becki Murphy  
Ginger Dunning & Jacqueline Murray  
Stan & Diane Nelson  
Gary & Patricia Nelson  
Lin & Nancy Nelson  
Dan & Kim Newell  
Ria Nickerson  
Northern Products Corporation  
Northshore Veterinary Hospital  
Northwest WA Estate Planning Council  
Ocean Beauty  
Rich Olson  
Daisye Orr  
Pacific Coast Shellfish Growers Association  
Mark & Helen Packer  
Pacific Rim Outpatient Surgery Center  
Diane Padys  
Salvatore & Nancy Papetti  
Parker, Smith & Feek  
Paul G. Allen Family Foundation  
PeaceHealth St Joseph Medical Center  
Tony & Diana Pechthalt  
Brian & Carla Pederson



Pederson Bros., Inc.  
 Edd & Virginia Perry  
 Ralph & Sharon Peterson  
 Phillips 66 Ferndale Refinery  
 Phoenix Metalworks LLC  
 Rick & Rosanna Porter  
 Barry Potter  
 PowerTek Electric  
 Greg & Susan Pratt  
 Mike Price  
 William & Leah Prince  
 Bob & Audra Pritchett  
 Puget Sound Energy  
 Bill & Sharon Pulse  
 Purse Seine Vessel Owners  
 Association  
 Renee Marr & Jim Quick  
 Rachel Quinn  
 Dave Reed  
 Greg Rehm  
 Rice Insurance, LLC  
 Wendy Riedy  
 Dale and Penny Rings  
 Gene & Bonnie Rohrbeck  
 Pete Romero  
 Matt & Sarah Rose  
 Jim & Linda Ryan  
 Safeco Insurance Foundation  
 Scan Design Foundation  
 Teresa Schmidt  
 Mike & Elizabeth Schoppert  
 Geri Schuhmann  
 Miriam Schwartz  
 Schweitzer Engineering Laboratories  
 SCORE  
 Kate Scott  
 SE Roberts Sales Company  
 Seattle Roofers Apprenticeship Trust  
 Seattle Shellfish  
 Louise Settlemeyer-Lott  
 Seven Sisters  
 Charlie Sheldon  
 Bruce & Cyndie Shepard

Sisu Children's Fund  
 Billy Slesk  
 Curt & Ruby Smith  
 Guy Smith & Christine Eder  
 Judy Smith  
 Jeff Smith  
 Smith Equipment  
 SNC-Lavalin  
 Gary & Tami Solari  
 Sound Beverage Distribution, Inc  
 Dorothy Spencer  
 Roz & Richard Spitzer  
 St. Lukes Foundation  
 Margie Stanley  
 Jack & Sandie Starr  
 Earl Steele  
 Brian Steele  
 Tim Stettler  
 Jason & Chi-Na Stoane  
 Elizabeth Story  
 Wade & Leah Stringfield  
 Sven & Diedre Stroosma  
 Sunrise Rotary Club  
 Anne Rigsby Talbott  
 Randy & Karen Tarter  
 Taylor Shellfish  
 TC Trading Company, Inc  
 Technology Alliance Group for  
 Northwest Washington  
 Holly & Peter Telfer  
 Roxanne Telling  
 Marti Tennant  
 Shannon & Amy Terrell  
 Terry Terry  
 Tesoro Anacortes Refinery  
 Gary Tetrick  
 The Unity Group  
 Thomas & Martina Horn Foundation  
 Tiger Construction, LTD  
 Transfield Services  
 Trans Ocean Products, Inc  
 Trident Seafoods Corporation  
 Loch & Susan Trimmingham

## Donor profile: Mt. Baker Imaging



“There is no gift like education.”  
 Charles Ariz, MD

BTC, home to the only radiologic technology program in Whatcom County, has a special relationship with Mt. Baker Imaging, home to the area's only radiology group. MBI's board of directors decided that providing scholarships for students in BTC's Radiologic Technology program is a logical way to give back to the community, while ensuring a steady supply of skilled radiologic technologists to fill a growing demand in this vital healthcare specialty.

“Radiologic technology is a great fit for students who are interested in healthcare, interacting with patients and digital technology. It's a challenging profession that requires critical and independent thinking, and it can open doors to many other medical careers,” said Charles Ariz, MD, Philanthropy Chair for Mt. Baker Imaging. “The BTC program is great for the community because it provides promising students a chance to get started in the medical field,” he continued.

“There is no gift like education. It's very heartwarming for all of the radiologists involved to see that we can help students from a variety of backgrounds—who might not otherwise have the means—to complete the Radiologic Technology program and succeed in their careers.”



# donor recognition

---

Craig & Lisa VanZanten  
Bill & Joann VanZanten  
Ronald & Carolyn Vekved  
Viktor & Luda Vetkov  
Vital Choice Seafoods  
Christine Vowles  
David Walker  
Marge Laidlaw & Scott Wallace  
Linda Walsh  
Walton Beverage  
Michele Waltz  
Bob & Kim Warshawer  
Washington Dental Service  
Foundation  
Washington State Combined Fund  
Drive  
David Webster  
WECU  
Richard & Suzet Wei  
Michael & Joyce Weinand

Elizabeth & Clair Weiss  
Western Forest Products  
Western States Petroleum Association  
Western Washington University  
Russ & Bekki Weston  
Westward Seafoods  
Whatcom Community College  
Whatcom County North Rotary Club  
Whatcom County School Retirees  
Association  
Scott Wheeler  
Russell & Jeanine Whidbee  
Whidbey Island Bank  
Tami & Gordon Willett  
Therese Williams  
Dennis Williams  
Williams Companies  
Joe & Kasha Wilson  
Russ Wilson  
Wilson Engineering

Robin & Leslie Yates  
Gary Young  
Z Recyclers  
Dr John & Marlene Zei  
Jeff & Judy Ziels  
Eric & Tonda Zimmerman  
Gerry Zmolek  
Jim & Shirley Zuanich



**Current Endowments:**

- Aftermath Club Endowment
- Bill Bond Memorial Endowment
- Blythe Plumbing & Heating Endowment (D.C. Morse & Jan Marchbanks )
- Board Designated Endowment
- BP Cherry Point Endowment
- Brooks Manufacturing Endowment
- BTC General Endowment
- Curt Smith Endowment
- David and Joyce Morse Endowment
- Dawson Construction Endowment
- Douglas Blair Memorial Endowment
- Fielding Formway Endowment
- Haskell Endowment for Faculty Excellence
- Helen DeVries Board Designated Endowment
- J&R Small Endowment
- Jack & May Meyers Endowment
- Jack B. Cole Endowment
- Laidlaw/Wallace Family Endowment
- Larry Nace Endowment
- Malia Haglund Endowment
- Mary Scott Memorial Endowment - "Scotty's Fund"
- McArdle Endowment for Student Success
- Mike McShane Memorial Endowment
- Morse Steel Service Welding Endowment
- Mt Baker Imaging Endowment
- Patricia McKeown Endowment
- Phillips 66 Endowment
- Rotary Club of Bellingham Endowment
- Settlemyer Family Endowment
- Suzanne Taylor Lybecker Memorial Endowment

While every effort has been made to ensure the accuracy of the Donor Recognition List, errors may occur. Please inform us of any errors or omissions by contacting the Foundation office at 360-752-8684 or btcfoundation@btc.ctc.edu.

Thanks to the generous support from area businesses, individuals, foundations and service organizations, the Bellingham Technical College Foundation is able to provide vital scholarship support to our students. Scholarships make a difference – Endowments leave a legacy. Please contact the BTC Foundation office at 360-752-8464 to learn more about establishing an Endowment or Named Scholarship.

<u>Fiscal Year</u>	<u>Number of Scholarships Awarded</u>	<u>Amount</u>
2007-2008	94	\$ 85,745
2009-2010	114	\$142,147
2010-2011	156	\$211,036
2011-2012	162	\$246,858
2012-2013	192	\$254,000
<b>Grand Total</b>	<b>718</b>	<b>\$939,786</b>

**BTC ADVANCEMENT TEAM  
BTC Foundation**

Dean Fulton, Executive Director  
 Brad Tuininga, Development Director  
 Valerie James, Advancement Assistant

**BTC Marketing**

Marni Saling Mayer, Director of Marketing  
 Christine Vowles, Graphic Designer



Bellingham Technical College  
3028 Lindbergh Avenue  
Bellingham, WA. 98225

Non-Profit Org  
US Postage  
PAID  
Bellingham, WA  
Permit No.138

